

RELTEC CIRCULAR TECHNICAL INSTALLATION SUGGESTIONS

1. STORAGE IN THE BUILDING SITE.

- ➔ Protect the moulds against high temperatures.
- ➔ Avoid a long-term sun exposure.
- ➔ Do not lean weights on the formworks.



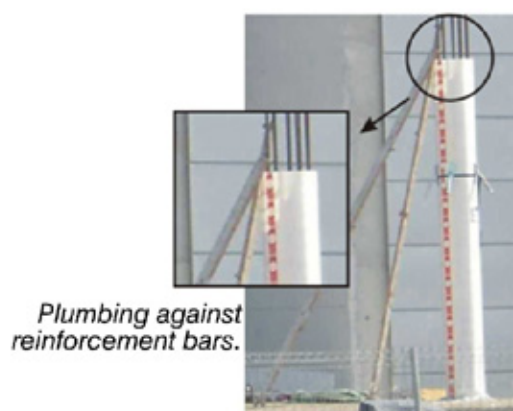
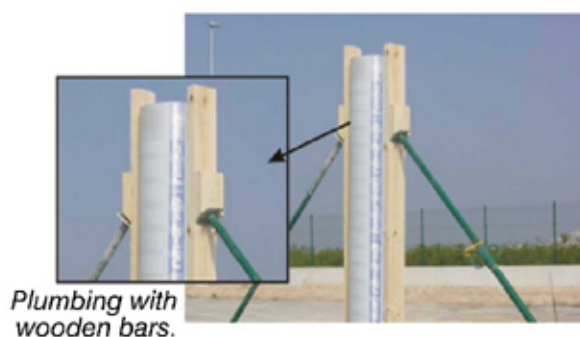
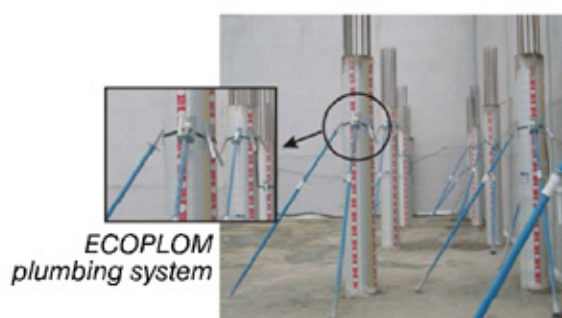
2. SETTING UP.

- ➔ Ensure the mould base by means of wooden bars or plaster in order to avoid concrete leaks or displacement.
- ➔ De-moulding agents are not needed.



3. PROPPING UP.

- ➔ Prop up the moulds as shown in the pictures.
- ➔ Plumb the mould before pouring the concrete.



RELTEC CIRCULAR TECHNICAL INSTALLATION SUGGESTIONS

3. PROPPING UP *(Second part).*

- ➔ The number of props needed depends on the external diameter of the mould:
 - $\emptyset < 350\text{mm} \rightarrow 3$ props
 - $\emptyset > 350\text{mm} \rightarrow 4$ props
 - $\emptyset > 650\text{mm} \rightarrow 5$ props
- ➔ Heights over 5 meters require two groups of supports: one of them should be placed at the top and the other one, at the middle of the mould.
- ➔ To avoid pressure points or damage, do not fix the props directly to the mould surface.



4. CONCRETE POURING.

- ➔ Avoid pouring the concrete from excessive height. A funnel system is recommended to lead the concrete when pillars of great height are produced.
- ➔ Do not vibrate for too long or reintroduce the pump hose in the formwork to prevent blowholes.
- ➔ Do not bump or damage the formwork with the vibrator.
- ➔ After pouring the concrete, an accurate plumbing should be made with ECOPLOM, wooden bars or a similar system. Never fix the props directly to the mould surface.